

Conditional Use and Sewer in the Route 230 Corridor

The Route 230 Corridor has been zoned for commercial development since 1979, however, it has seen minimal development because the current zoning must be updated to reflect current industry uses. To accomplish this zoning update, the Township is proposing additional uses to the C2 zoning located along the route 230 Corridor.

Why conditional use? Conditional use allows for economic growth with the maximum protection for the Township because we can impose reasonable conditions on any proposed development. What may the additional uses be? The Township is proposing adding logistics centers, business and professional parks and mini-warehouses to uses allowed by conditional approval in the C2 zoning district.

Why would the Township do this? The Township needs to create a tax base to offset the loss of TMI tax and fundraising revenue (\$100,000.00) and to fund outstanding liabilities such as road work (\$1,200,000.00 annually per our engineering study) depreciation expense (\$700,000.00 per year per the audit) and the DEP mandated 537 Plan (sewer costs \$27,500,000.00). Additionally, while the Township has historically flown under the radar of regulatory agencies, that is no longer the case. DEP met with the Township this year and indicated that they expected to have the 230 Corridor project completed by the Township -and- that they were not giving us ten more years to do so. The current schedule in the 537 Plan requires this project to be completed in the next seven years.

The Township has had to absorb almost \$700,000.00 in expenses for floodplain compliance (FEMA mandated), implement On Lot Septic pumping (per DEP), which required hiring staff, and Stormwater and Chesapeake Bay Pollutant Reduction Plan mandates (EPA and DEP) which also required hiring staff and funding projects. These are all unfunded mandates; that is, they are programs we have to legally implement, but there is no funding provided so we have to pay for it out of existing revenues. We simply cannot continue to absorb these costs within our existing budget. The amount of revenue received remains static and the amount of expenses increases and this is not a sustainable business model. The Township can only increase revenue by increasing taxes, obtaining grant funding or through growth of the tax base (development). Nobody wants a tax increase, and while the Township has been extremely successful in obtaining grant funding, there are simply not grant programs available for all of the requirements the Township has. Development may not be popular, but the fact remains that the Township must allow limited growth to meet its financial and regulatory obligations. The Township

Continued on page 12

IN THIS ISSUE

Municipal Office	
Township Information	2
Election Day Information	2
2020 Meeting Dates & Times.....	2
Board of Supervisors	3
Pennsylvania State Police Information	3
State & Federal Officials	3
Tax Services	
Tax Collector News.....	3
Public Works	
Winter Maintenance & Snow Removal.....	4
Certified Pumper Haulers.....	5
Stormwater & Environmental Dept	
Spotted Lanternfly.....	5
Riparian Buffers	6
Tree Canopies	6
Grass on the Roads	6
Illicit Discharge Awareness	7
Emergency Contact List for Spills	7
Fall and Winter Stormwater Tips.....	8
Londonderry Township Recognized as Certified Sustainable Municipality.....	8
Invasive Plants and Animals.....	9
Save the Dates	9
Get Involved with MS4.....	9
Recycling	18
Emergency Services	
Fire Company Volunteers.....	10
Ambulance Volunteers.....	10
Reflective Signs.....	10
Emergency Management	
EMA Team Development	11
Fall Fire Safety Tips.....	24
Codes/Zoning	
Certified Pumpers/Haulers	5
Conditional Use and Sewer in Rt. 230 Corridor <i>Continued</i>	12-13
Sewer Services Areas Maps.....	14-15
OLDS Progress	15
Conewago Creek Water Quality	19
Sunset Golf Course	
Experience the Change.....	16
Pro Shop Sale.....	16
2020 Golf Pass	16
Sunset Golf Course App.....	16
Sunset Bar & Grill	
Happenings at the Club House	17
Banquet Hall Rental & Catering.....	17
Recreation	
Bocce Winners	20
Rugby Field Update.....	20
Community Outreach	
Volunteer Application.....	21
Help the Ronald McDonald House	21
Meals on Wheels.....	21
Stray Animals & Dog Licenses	22
Londonderry Lionettes	23
V.I.P. Senior Van Service	23

TOWNSHIP OFFICE

www.londonderrypa.org
783 S. Geyers Church Road
Middletown, PA 17057

PHONE: 717-944-1803

HOURS: Monday – Friday
8:30 a.m. – 5:00 p.m.

Steve Letavic, Township Manager
sletavic@londonderrypa.org
Jeff Burkhart, Code/Zoning Officer
jburkhart@londonderrypa.org

SUNSET GOLF COURSE

www.sunsetgc.com
2601 Sunset Drive
Middletown, PA 17057

PHONE: 717-944-5415

Sam Risteff, Interim Manager
sristeff@londonderrypa.org

BOARD OF SUPERVISORS

Anna J. Dale, Chair
Mike Geyer, Vice Chair
Mel Hershey, Member
Ron Kopp, Member
Bart Shellenhamer, Member

TAX OFFICE

Loren M. Bowen, Tax Collector
2900 East Harrisburg Pike
Middletown, PA 17057

PHONE: 717-944-2842

FAX: 717-944-8238

HOURS: Wednesday
10:00 a.m.– 2:00 p.m.
6:00 p.m.– 8:00 p.m.
Thursday
10:00 a.m.–2:00 p.m.

NEWSLETTER

EDITORS: Angie Evans and
Steve Letavic

DESIGN: Beth Carroll, 717-578-1809
info@BAMACTION.com

Don't Forget to VOTE

ELECTION DAY – Tues. Nov. 5, 2019

Residents that are United States citizens and 18 years of age or older are encouraged to exercise their right to vote. Dauphin County Voter Registration: 717-780-6360. If you are a registered voter and unsure of which precinct you are to vote at, please call the Township Office at 717-944-1803.

Polls are open 7:00 a.m. – 8:00 p.m. at these locations:

Precinct #1 Anglers & Hunters • 1350 Schoolhouse Road
Precinct #2 Londonderry Fire Company • 2655 Foxianna Road
Precinct #3 Grace Chapel • 2535 Colebrook Road

**NOTE: PRECINCT #2 HAS MOVED TO
LONDONDERRY FIRE COMPANY**

2020 Meeting Dates

All meetings are held at the Township Municipal Building,
783 S. Geyers Church Road in Middletown

BOARD of SUPERVISORS — 7:00 p.m.

1st Monday each month, unless otherwise noted

PLANNING COMMISSION — 7:00 p.m.

3rd Monday each month, unless otherwise noted

ZONING HEARING BOARD — 7:00 p.m.

2nd Monday each month, unless otherwise noted

BOARD of SUPERVISORS WORKSESSION — 7:00 p.m.

3rd Tuesday each month, unless otherwise noted

Can't Make a Meeting?

Board Minutes are now available on the web!

(posted the following month)

Please check our website for 2020 meeting dates.

<http://www.londonderrypa.org>

New Board of Supervisors

Pictured L-R Back Row:
Bart Shellenhamer, Member;
Anna J. Dale, Chair;
Mike Geyer, Vice-Chair

Pictured L-R Front Row:
Mel Hershey, Member;
Ron Kopp, Member



Emergencies - 911
Non-Emergencies - 717.671.7500

Address: PA State Police - Troop H
8000 Bretz Drive • Harrisburg, PA 17112

GET NEWS & UPDATES ANYTIME!
See Important information & Upcoming Events.

www.londonderrypa.org
facebook.com/londonderrytownship

Tax Collector News – Loren M. Bowen

Where Did the Summer Go?

The discount period for the school taxes ended August 31st. Also the first payment was due August 31st if you wanted to take advantage of the 3 payment plan. If you did not get the first payment in by then you cannot use the 3 payment plan. Note that if you use the payment plan you do not get the 2% discount.

There is an exemption for the Occupation Tax if you are a full time college student both semesters, if your earned income is less than \$6,000, if you are a member of the clergy with no other occupation, or if you are over 70 years of age on

July 1st. This exemption is for the Occupation Tax only. The \$10 per capita and the \$5 Township tax is still due with applicable discounts and penalty. An EXEMPTION FORM must be filed with the tax collector to get the exemption. The forms are available at my office (there is a box outside my door that is open 24/7) or you can download one at Lower Dauphin's website ldsd.org.

For payment of taxes I accept check, money order or cash. We are not set up to accept credit cards.

I hope the remainder of the year is good for you, have a great fall!

Loren



STATE & FEDERAL OFFICIALS

PRESIDENT OF THE UNITED STATES
DONALD J. TRUMP
1600 Pennsylvania Avenue
Washington, DC 20500
202-456-1414

GOVERNOR TOM WOLF
508 Main Capitol Building
Harrisburg, PA 17120
717-787-2500

CONGRESSMAN DAN MEUSER
1044 E. Main Street
Palmyra, PA 17078
717-473-5375

SENATOR MIKE FOLMER
Capitol Office – Senate
P.O. Box 203048
Main Capitol Building
Harrisburg, PA 17120-3048
717-787-5708

REPRESENTATIVE DAVID HICKERNELL
Capitol Office –
House of Representatives
P.O. Box 202020,
Room 143-B, East Wing
Main Capitol Building
Harrisburg, PA 17120-2020
717-367-5525

DAUPHIN COUNTY COMMISSIONERS
JEFFREY T. HASTE, Chairman
MIKE PRIES, Vice Chairman
GEORGE P. HARTWICK, III, Secretary
P.O. Box 1295
Harrisburg, PA 17108
717-780-6300

Public Works Department

Winter Maintenance and Snow Removal

Like it or not, it will be cold and snowy again soon. The Londonderry Township Public Works Department is ready for the winter season.

We are always looking to recruit part-time snow plow truck drivers, CDL and non-CDL drivers. If you or anyone you know is interested, please complete an application at the Township office located at 783 S. Geyers Church Road, Monday through Friday, between the hours of 8:30 a.m. and 5:00 p.m. Applications are also available on the Township website.

When we are not performing winter maintenance on our roads, we will be doing other maintenance work on various Township roads. Please be alert for Work Area signs, equipment and Public Works employees.

Following are additional reminders for snow removal:

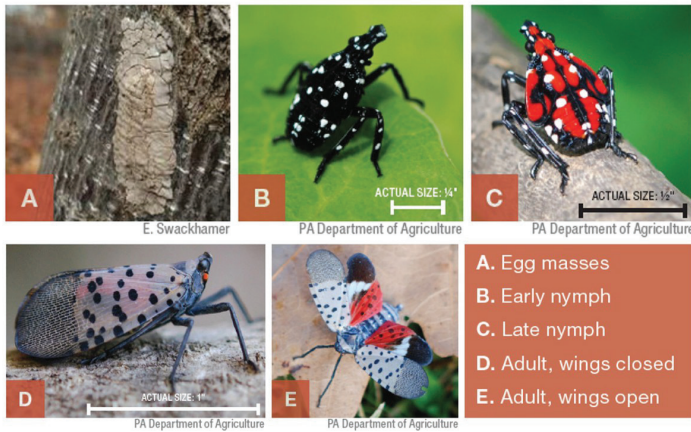
- Do not place snow on Township roads, in drainage ditches or over storm drains. If you have a storm drain in front of your property, please keep it clear of leaves and all debris.
- If you have a basketball net that hangs over any portion of a Township road, please remove it. It is a hazard for passing vehicles, including garbage trucks, delivery trucks and especially snow plows that need to get close to the curbing and the edge of the road.
- Residents should take the time to secure loose or broken mailboxes, fences or other property that lies within close proximity to the roadways, to prevent avoidable damage from normal snow plowing operations.
- When snow falls, please be patient. Our crews salt 67 miles and plow 135 lane miles of Township and State roads. We will do our best to get a plow truck to your street as quickly as possible.
- If you clear your driveway before the street is plowed, pushing or blowing of snow into the streets is not permissible. When the plow truck comes by, the snow will inevitably end up back on your property. It is NOT the responsibility of the Township to clear the end of your driveway once the plow has passed through.
- When a snowstorm is forecast, remove all vehicles from Township roads so the entire road can be plowed.
- Plowing main arteries will be our first priority, followed by secondary roads and then developments.
- Sidewalks and fire hydrants must be cleared within 24 hours after the end of a snow or ice event.

Please call the Township at 717-944-9440 with any questions or concerns related to the potential roadway and/or winter maintenance.

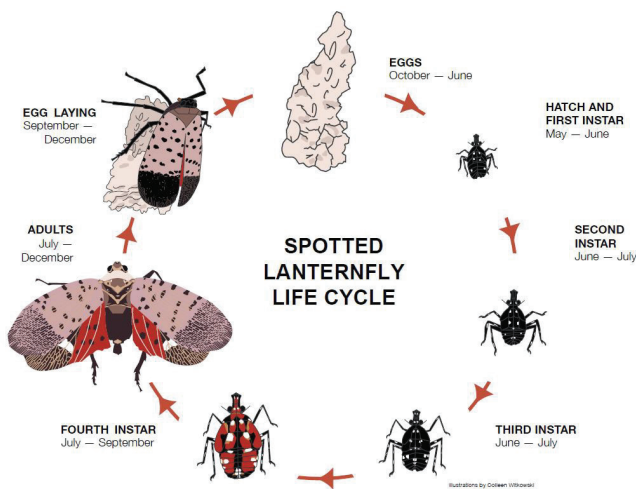


Spotted Lanternfly Help Locate Them

Spotted Lanternfly, *Lycorma delicatula*, is a new threat to PA and the United States, and experts are still learning how to combat it. Please see our website for more information on what to do about sightings. www.londonderrypa.org.



Life Stages of Spotted Lanternfly All life stages of the spotted lanternfly, from egg to adult.



Life Cycle of Spotted Lanternfly The life cycle of spotted lanternfly, beginning from egg to adult. There is one generation per year in Pennsylvania. Adults die in the winter, and the eggs overwinter and hatch in the spring.

extension.psu.edu

Certified Pumpers/Haulers

ASSOCIATED PRODUCTS SERVICES, INC.
717-766-5397
2 East Road • Mechanicsburg, PA 17050

BAKER'S SEPTIC SERVICE, LLC
717-367-7271
1538 Ridge Road • Elizabethtown, PA 17022

BAUMAN'S SEPTIC SERVICE
717-469-2463
39 Homestead Road • Grantville, PA 17028

DILLSBURG EXCAVATING & SEPTIC, INC.
717-432-9704 • 717-545-2610
516 Range End Road • Dillsburg, PA 17019

THOMAS H. ERB & SONS, INC.
717-626-5591
268 Sego Sago Road • Lititz, PA 17543

R E FINK & SONS, LLC* • 717-938-3581
1920 Old Trail Road • Etters, PA 17319

GERBERICH-HOFFMAN SEPTIC SERVICES
717-865-2015 • 717-867-5024
165 Mowery Road • Jonestown, PA 17038

KAUFFMAN'S SEPTIC SERVICE, LLC • 717-944-4308
236 Governor Stable Road • Bainbridge, PA 17502

JOHN KLINE SEPTIC SERVICES, LLC • 717-898-2333
3869 Old Harrisburg Pike • Mount Joy, PA 17552

KLINE'S SERVICES • 717-898-8158
5 Holland Street • Salunga, PA 17538

PAGE SEPTIC SERVICES* • 717-865-5752
7733 Althea Avenue • Harrisburg, PA 17112

UNDERWOOD SEPTIC SERVICE & REPAIRS, LLC*
484-888-2350
620 Noble Road • Christiana, PA 17509

WALTER M. STROHL, LLC SEPTIC SERVICES
717-733-2339
670 W. Girl Scout Road • Stevens, PA 17078

WALTERS ENVIRONMENTAL SERVICES, INC.*
717-469-0588
PO Box 400 • Grantville, PA 17028

*pumper haulers that will pump island properties

Stormwater And Environmental Department

Riparian Buffers

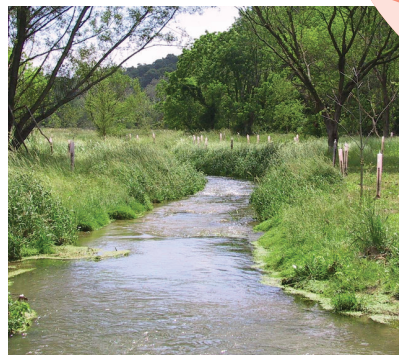
WHAT IS A RIPARIAN BUFFER?

Do you have an eroded bank on your property? Is your property line receding because it is falling into the creek? Creeks, streams and rivers will stabilize when they are planted with grasses and trees, these areas are called Riparian Buffers. A riparian area will not only prevent erosion, but will filter pollution from human land use before it reaches the water.

WHAT ARE THE BENEFITS OF BUFFERS?

- Prevent streambank erosion by using roots for stabilization
- Reduced impacts from flooding
- Increase aesthetic value
- Trap, filter and slow runoff
- Provide shade for temperature control
- Provide food, cover and habitat for wildlife
- Absorb and store excess nutrients which are associated with decreased water quality

If you are interested in planting trees along your streamside property, at no cost to yourself, please contact Monique Dykman at MDykman@Londonderrypa.org.



Planted riparian buffer with protective tree tubes



TURN THIS

A heavily eroded stream channel



INTO THIS

A mature forest adjacent to a stabilized stream channel

Tree Canopies

Although tree canopies are scenic and enjoyable to drive through, they can also cause a hazard to vehicles and the road surface. While low hanging branches keep the road shaded, they also keep the sun from drying the road after it rains, and hinders the melting process of ice and snow in the winter. Emergency vehicles must travel slower to avoid low hanging branches from striking their vehicles. Delivery trucks, garbage trucks, and school buses also have a difficult time passing safely under low hanging limbs. During rain and snow events, these limbs hang even lower than usual making safe passage more difficult.

It is not our intent to remove all trees from hanging over the roadway. But we do have to make it safe for all vehicles and pedestrians to travel the roadways. We will be removing limbs back 3 to 4 feet from the edge of the pavement, and 16 to 20 feet above the road surface. We will also be removing the dead limbs that we can reach before they cause damage to vehicles or pedestrians.



Grass on the Roads

When mowing your lawn this Autumn, make sure you keep all grass clippings and garden trimmings off the road.



When left on our roads, they can create dangerous driving conditions, especially for motorcyclists, as well as add to stormwater runoff. This debris, often times containing fertilizer, is not meant to be in our waterways and disrupts the natural ecosystem. Please make sure to either blow your clippings or sweep them from the road. **DO NOT DUMP DOWN THE STORM SEWER.** *It is also a good idea to leave the clippings on your lawn, they serve as a great natural fertilizer!*

Stormwater & Environmental Department

LONDONDERRY TOWNSHIP ILLICIT DISCHARGE AWARENESS

An illicit discharge is any discharge not composed entirely of stormwater, entering a Municipal Separate Storm Sewer System aka an "MS4" aka a storm drain.

An illicit discharge also includes any piping or drainage leading directly into a storm drain that was not initially placed during construction. MS4's are only intended to carry stormwater directly to streams and rivers. Any illicit discharges flowing into an MS4 can pollute the streams in the area, harming the wildlife and way of life of the people who use these streams.

How You Can Help?

The easiest way you can help is by disposing of liquid wastes properly and not allowing them to flow into storm drains. You can also check your storm drains near your home to make sure no pipes are flowing from your home which you were not previously aware of.

If you notice a possible illicit discharge you can contact the MS4 Environmental Specialist at 717-461-0027.

However, if you ever see a rare, large quantity spill which would be unable to be handled locally, please call DEP's South-Central 24/7 Emergency number at 866-825-0208.

Examples of Illicit Discharges

- Sanitary Wastewater
- Septic Tank Effluent
- Chlorinated Pool Discharge
- Improper Oil/Radiator Flushing Disposal
- Laundry Wastewaters
- Spills from roadway accidents
- Improper disposal of household toxins



Exemptions

- Discharges from fire-fighting activities
- Fire hydrant flushing
- Potable water, including water line flushing
- Uncontaminated condensate from air conditioners, coolers, and other compressors and from the outside storage of refrigerated gases or liquids
- Irrigation drainage
- Landscape watering provided all pesticides, herbicides, and fertilizer have been applied in accordance with the approved labeling
- Pavement wash waters where no detergents are used and no spills or leaks of toxic or hazardous materials have occurred
- Routine external building washdown that does not use detergents
- Uncontaminated ground water or spring water

Emergency Contact List for Spill Response

MS4 Dept. Spill Reporting, Monique Dykman

(Business hours; 8:30-5, M-F) 717.944.1803

South-Central Emergency Number (24/7)

717.705.4700

LONDONDERRY TOWNSHIP

- **MS4 Dept., Monique Dykman**
Spill Reporting after business hours 717-461-0027
- **Township Manager, Steve Letavic**
717.580.2089
- **Public Works Director, Andy Brandt**
717.443.5426
- **Sunset Golf Superintendent, Sam Risteff**
717.943.4547

PENNSYLVANIA DEP

- **South-Central Regional Office, Lynn Langer**
717.705.4700
- **South-Central Emergency Number (24/7)**
717.705.4700
- **EPA National Response Center 1.800.424.8802**
US Coast Guard

LONDONDERRY TOWNSHIP VOLUNTEER FIRE CO.

- **In an EMERGENCY... DIAL 911**
- **Fire Company Chief, Bart Shellhammer**
717.571.0428
- **Fire Company Assistant Chief, Matt Naples**
717.943.0706

CONSULTANTS

- **Sewer Enforcement Officer, Timothy Wargo**
Hoover Engineering Services 717.443.2878
- **HRG Engineering, Andrew Kenworthy**
717.564.1121

Contact Codes (determine the kind of spill, then contact the appropriate person highlighted in the corresponding color)

Common Spill/Illicit Discharge

Rare, large quantity spill unable to be handled locally

EMERGENCY – Immediate danger to health, property, and environment

Stormwater And Environmental Department

Fall and Winter Stormwater Tips

- **CLEAR LEAF DEBRIS** - Protect your storm water drains from leaves. Allowing leaves near stormwater drains will result in water build up, and is dangerous for motorcyclists.

- o **PRO TIP:** Consider mowing over raked up leaves and placing them in your garden to protect plants from the harsh winter incoming, or add the leaves to your compost!

- **SHOVEL YOUR SNOW** - Always shovel snow into vegetated areas, rather

than into streets or into streams. The plant life and soil will absorb and filter out any pollutants, including grime, dirt, road salt and other pollutants from paved roads. Otherwise, as the snow melts, these contaminants are released, in concentrated amounts, and washed right into the MS4 to be discharged into local waterways.

- o **CONSIDER SALTING**

- o **ALTERNATIVES** - Road salt can be harmful to plants, aquatic life, drinking water supplies and

expediate vehicle corrosion. Salt alternatives like potassium acetate (KA) and calcium magnesium acetate (CMA) can be used to de-ice sidewalks and driveways and are less damaging, or apply sand to improve traction and slow the formation of ice. If you do apply salt, shovel first and apply as little as possible – and remember it is not effective when the temperature drops below 15°.

More salt ≠ more melting snow.

Londonderry Township Recognized as Certified Sustainable Municipality



Londonderry Township is among a select group of high performing municipalities to become certified through the Sustainable Pennsylvania Community Certification program. Londonderry Township is recognized at the Bronze level of certification for meeting the program's rigorous performance criteria which track 131 policies and practices that define a sustainable community.

The Sustainable Pennsylvania Community Certification, managed by the Pennsylvania Municipal League in partnership with Sustainable Pittsburgh, is designed for municipalities that are working to save money, conserve resources, and serve vibrant communities. The certification is implemented statewide, recognizing Townships, cities, and home rule municipalities across the Commonwealth. The Pennsylvania Municipal League and Sustainable Pittsburgh applaud municipalities for their demonstrated commitment and sustainability performance.

In earning the Bronze certification, Londonderry Township is acknowledged for its progress in such areas as community design and land use, energy efficiency, health and wellness, intergovernmental cooperation, recycling and waste reduction, fiscal controls, and internal management and operations. Details about Londonderry Township's certification performance within these topics can be found on the Certification program website: http://www.sustainablepacommunitycertification.org/users/certified_municipalities.

"Londonderry Township is proud to be recognized as a Bronze Certified Community by the Sustainable Pennsylvania

Community Certification program," said Steve Letavic. "The Township has a long history of commitment to saving taxpayer dollars, using resources efficiently, and applying best practices in municipal government and community development. We are pleased to be recognized and be part of the regional community of good government."

"We are delighted to see Londonderry Township distinguished among local governments that are leading the way in applying sustainability to both their operations and management as well as within the community," said Anne McCollum, Director of Training and Development, Pennsylvania Municipal League.

The Sustainable Pennsylvania Community Certification is intended to bring recognition to municipalities that are implementing the policies and practices of sustainability to advance community and regional prosperity. It also serves as a mechanism for sharing best practices for creating a more sustainable Pennsylvania. "Municipalities that earn the Sustainable Pennsylvania Community Certification have demonstrated a commitment to advancing sustainable best practices to foster thriving and vibrant communities where people long to live, work, and play. Commitment to continuous improvement and innovation is at the heart of sustainability and the Certification program is a means to accelerate municipal performance," said James T. Price, Sustainable Community Manager, Sustainable Pittsburgh.

For more information, please visit www.sustainablepacommunitycertification.org or contact Monique Dykman, at 717-908-6738 or mdykman@londonderry.org

Invasive Plants & Animals

Invasive plants and animals are nonnative to the area they are residing, and outcompete the native plants and animals. Invasive plants typically have natural advantages such as distributing large numbers of seeds, aggressive root systems, and/or produce leaves earlier in the season than their native counterparts, allowing them to sprawl out, blocking light from reaching the native plants. Similarly, nonnative plants do not provide necessary nutrients, and typically have an unpleasant taste to our native animals therefore, nonnative plants do not get grazed down at the same rate a native plant would. This allows the nonnative invasive species to grow uninhibited, and puts greater pressure on the remaining native plants.

TREE OF HEAVEN (AILANTHUS)

- Can grow from 80-100 feet tall and 6 feet in diameter.
- Leaves are attached along a central stem, positioned directly opposite of one another. Each stem can hold between 10-40 leaflets spanning 1-4 feet long.
- Pointy, riveted leaves, blossoms with yellowish flowers above the leaves.
- Leaves smell like cat urine or burnt peanut butter when crushed.
- Almost identical to Sumac.



Do not pull, as the root system will reinforce itself, and will sprout twice as strong the next season. To learn more about the treatment of the Tree of Heaven, contact MDykman@londonderry.org, or refer to documents published by Penn State Extension, or another creditable source.

Special Threat

- Grows everywhere and anywhere. Will even grow in between cracks in the sidewalk. Tree roots are extensive. May damage building foundations, underground pipes, and even kill other plant species nearby.
- Known as the host tree for the spotted lantern fly

POISON HEMLOCK

- Located along roadsides, field margins, ditches and waste areas.
- Hollow, purple stem reaching up to 8 feet tall. Leaves are "dissected", or intricately cut – similar to a fern.
- Smells like parsnip when crushed.
- As the name suggests, ingesting poison hemlock is toxic for wildlife and humans – even years after removal.



Luckily, removal of the entire root system is unnecessary to eliminate poison hemlock.

Poison hemlock can be controlled by hand pulling, or using Roundup. Roundup is often the preferred method to hand pulling to prevent an adverse reaction of painful blisters - resulting from poison hemlock coming in contact with skin, then being exposed to sunlight.

To learn more, or look into chemical removal of the poison hemlock visit DCNR's Invasive Plant Fact Sheet: Poison Hemlock.

Historical Fact: Used to kill Socrates

SAVE THE DATE!

**WEDNESDAY, OCTOBER 23RD
5:30-7:30**

Londonderry MS4 Department workshop on organic land care, rain garden installation and benefits of native plants with Mae Marie Organics.

Email MDykman@londonderry.org to learn more!

GET INVOLVED with the MS4 Environmental Department!

Name: _____

Phone: (_____) _____

Email: _____

I am interested in:

- Attending environmental informational workshops including: stormwater management, how to build a rain garden in your home, composting, green cleaning, etc.**
- Attending volunteer events, including: tree plantings, planting/weeding events, river cleanups, etc.**

Emergency Services

Fire Company Volunteers

We are always looking for volunteers for our fire department. If you are 14 years of age or older, please consider serving your community by volunteering. No prior experience is necessary. We will provide and pay for all training. All types of volunteers are needed; firefighters, fire police, EMT's, ambulance crew, auxiliary. Please feel free to send us a message or stop in at the fire company any Wednesday night between 6:30 p.m. and 9:30 p.m.



Londonderry Ambulance Volunteers Needed

CONTACT US TO LEARN MORE ABOUT BECOMING AN EMERGENCY MEDICAL TECHNICIAN OR EMERGENCY VEHICLE OPERATOR

Benefits:

Training Reimbursement • Sleeping Quarters • Full Kitchen • Weight Room • Live-In Program
NO PREVIOUS EXPERIENCE NECESSARY

NOW RECRUITING EMERGENCY MEDICAL TECHNICIANS

Londonderry Fire Company #1
2655 Foxianna Road • Middletown, PA 17057 • 717-944-9222 Ext. 7

CONTACT US TODAY! • WWW.LONDONDERRYFIRE.COM

REFLECTIVE SIGNS

What is the worth of your family, your home, or your life? How much would you be willing to spend to make it easier for emergency personnel to locate your home easily? Would \$20 be too much?

You may have seen those green numbered signs as you are driving around the Township. Ever wonder what they are for? They are emergency reflective signs. They make it easier for emergency personnel to find your house at night.

These signs are being sold by the Londonderry Fire Company. We want to respond quickly to your call for help. Please fill out the coupon and mail it back to us today. Isn't your family, your home and your life worth it?

**REFLECTIVE SIGN \$20 • SIGN WITH POST \$25
SIGNS ARE AVAILABLE HORIZONTAL OR VERTICAL**



ORDER YOUR REFLECTIVE SIGN TODAY

Mail your form with payment to:

Londonderry Fire Co. No.1 • 717.944.2175

2655 Foxianna Rd. • Middletown, PA 17057

Attention: Bart Shellenhamer

NAME: _____

ADDRESS: _____

PHONE: (_____) _____

HORIZONTAL OR VERTICAL

REFLECTIVE SIGN \$20 W/POST \$25

Make checks payable to: **Londonderry Fire Co. No. 1**

EMA Team Development

Since September 11, 2001 there has been an even bigger demand to be prepared in the event of an emergency and we all need to take a look at what we can do to help. In the past we depended on the local fire company to handle emergencies, but it is at a point where they can't do it alone. Creating the Emergency Management Agency was the first step, forming a team of volunteers was the second. Some members of the team have been involved with the fire company and/or the ambulance service for many years and we depend on their experience in emergencies. However, you don't have to have a background such as theirs to help. The EMA has regular meetings and training is provided throughout the year to those wanting to volunteer.

Our team of dedicated men and women look forward to welcoming you aboard, should you decide to become a volunteer. Please call Les Gilbert, Coordinator, 717-350-3492 or the Township Office, 944-1803 for more information on becoming a volunteer.

MAKE A PLAN FOR WHAT YOU WILL DO IN AN EMERGENCY:

Be prepared to access the situation, use common sense and whatever you have on hand to take care of yourself and your loved ones. Depending on your circumstances and the nature of the attack, the first important decision is deciding whether to stay or go. You should understand and plan for both possibilities.

Develop a Family Communications Plan:

Your family may not be together if disaster strikes, so plan how you will contact one another and review and review what you will do in different situations. Consider a plan where each family member calls, or e-mails, the same friend or relative in the event of an emergency. It may be easier to make a long-distance phone call than

to call across town, so an out-of-state contact may be in a better position to communicate among separated family members. You may have trouble getting through, or the phone system may be down altogether, but be patient.

Staying Put: There are circumstances when staying put and creating a barrier between yourself and potentially contaminated air outside, a process known as "shelter-in-place", can be a matter of survival. Choose an interior room or one with as few windows and doors as possible. Consider precutting plastic sheeting to seal windows, doors and air vents. Each piece should be several inches larger than the space you want to cover so that you can duct tape it flat against the wall. Label each piece with the location of where it fits.

If you see large amounts of debris in the air, or if local authorities say the air is badly contaminated, you may want to "shelter-in-place". Quickly bring your family and pets inside, lock doors, and close windows, air vents and fireplace dampers. Immediately turn off air conditioning, forced air heating systems, exhaust fans and clothes dryers. Take your emergency supplies and go into the room you have designated. Seal all windows, doors and vents. Watch TV, listen to the radio or check the Internet, if available, for instructions.

Getting Away: Plan in advance how you will assemble your family and anticipate where you will go. Choose several destinations in different directions so you have options in an emergency. If you have a car, keep at least a half tank of gas in it at all times. Become familiar with alternate routes as well as other means of transportation out of your area. If you do not have a car, plan how you will leave if you have

If you need assistance during an event of a State of Emergency (declared by the Governor) please contact the EMA at:

Phone: 717-350-3492 • Fax: 717-546-0679

Email: londonderrytownshipema@gmail.com

to. Take your emergency supply kit and lock your door behind you.

At Work or School: Think about the places where your family spends time: school, work and other places you frequent. Talk to your children's school and your employer about emergency plans. Find out how they communicate with families during an emergency. A community working together during an emergency also makes sense. Talk to your neighbors about how you can work together.

MAKING A KIT OF EMERGENCY SUPPLIES:

Water: One gallon of water per person per day, for drinking and sanitation. Children, nursing mothers, and sick people may need more water. Keep at least a three-day supply of water per person.

Food: Store at least a three-day supply of non-perishable foods such as ready-to-eat canned meats, fruits, and vegetables. Also protein or fruit bars, dry cereal, peanut butter, crackers, nuts, canned juices, vitamins, etc.

First Aid Kit: Items such as sterile dressings, cleaning agents, antibiotic ointment, adhesive bandages, eye wash, thermometer, prescription medicines, scissors, tweezers, petroleum jelly, antacid medication, aspirin, etc.

Miscellaneous Supplies: Items such as flashlights, extra batteries, radio, cell phone, map, clothing, bedding, paper towels, non-electric can-opener, toilet paper, personal hygiene products, tools, etc.

The above items are just suggestions. Please use your own judgment for what your family may need.

Conditional Use and Sewer in the Route 230 Corridor

Continued from front page

currently has five full-time positions that have been -and- must remain vacant because it cannot afford to hire.

Relative to sewer, the Township has two separate sewer projects that must be accomplished in the next seven years per DEP. The first is to provide sewer to the Londonderry Estates Development. This is expected to cost approximately \$1,500,000.00 and be completed in the next three years. The larger issue for the Township is the route 230 Corridor. That sewer project is expected to cost \$26,000,000.00. This area must have public sewer per the Township's DEP approved 537 Plan. The 537 Plan is the plan for providing public sewer in the Township and areas are prioritized based upon the number of failing systems and amount of attendant water pollution. All flows are expected to go to treatment plants in Derry Township. The cost of constructing these sewer lines is not something the Township can afford. The Township's general fund budget is approximately \$2,200,000.00 per year. The debt service on the sewer lines would be as much as our annual general fund budget. The Township cannot tax our residents to pay for these costs, the tax burden would be too high and devalue our real estate. The annual increase in local real estate taxes could be as much as \$1,200.00 for each home with an average assessed value of \$100,000.00. It would be unfair to take this approach and tax all Township residents to pay for this sewer line because most of them would not get the benefit of public sewer service they would just get the expense. The Township does not have the borrowing base capacity to borrow the amount of funds required for this project. The short answer is that the Township cannot tax nor borrow its way to the completion of this DEP mandated project.

Alternatively, the Township is proposing to partner with developers in the 230 Corridor so that the cost to construct the main line is paid for by the developers (not our residents) and that capacity will be created in this line for the rest of the Township's mandated obligations in this area. Developers have pledged \$15,000,000.00 to construct the main sewer line and pump stations. This line would extend from the sewer plant on Swatara Creek Road to Route 230 and end near Hoffer Road. There will still be \$11,000,000.00 in outstanding improvements required of the Township's 537 Plan and we are planning on creating a fund from the increase in tax base to help offset the debt service for meeting those obligations.

The lines, once constructed, would be dedicated to Derry Township Municipal Authority, thereby removing the long term liability for lines from Township residents.

The fact of the matter is that the Township is being forced to install the sewer lines in the 230 Corridor per DEP. The real issue is that we don't want our residents to have to pay for the entire cost of these lines. Additionally, and this is important, the Township recognizes that residents may not want any development, but that development will occur as soon as the sewer lines are installed so we want our residents to get the benefit of developers dollars not have the developers get the benefit of our resident's dollars. The point is, these lines have to be installed in the next seven years, what remains to be determined, is who pays for them? Residents or developers? We want the developers to pay for as much of the line as possible so our residents don't have to absorb the entire cost. We all live here, so we want the least amount of financial burden possible.

Questions we have been asked.

Will the additional uses to the C2 zoning district make my taxes go up? The answer is, the additional zoning uses will not increase your taxes, and we are trying to create a tax base so they don't have to go up in the near future either. Taxes are based upon use so if you are currently taxed at a residential rate, that tax rate will remain in place.

Will I have to connect to the sewer line?

The answer is that by current code, if the sewer line is within 150 feet of your home, you will be required to connect to it. The homeowner is responsible for the cost of the lateral line from the main line to their home. The Township is sensitive to, and understands that residents who have recently installed a new system or currently have a functioning system, will not want to connect to the sewer line. Accordingly, the Township is exploring if we can legally make this connection optional for residents along the 230 Corridor and may be able to do so because the line is proposed to be funded with private developer dollars.

We still have more work to complete on this to determine if this is possible, however, we are exploring the option with the state and sewer providers and hope to have

answers soon. If the Township has to borrow PA Vest funding to build this line there would be no option, everyone would be required to connect that was within 150 feet of the line per the PA Vest program regulations. So, if we do not partner with developers there will be mandatory connections.

What does it cost to connect to sewer and are there any programs to assist homeowners?

Those costs typically can range from \$14,000.00-\$18,000.00 for the lateral line connection from the house to the main sewer line if it requires a grinder pump, \$5,000.00 -\$10,000.00 if it is a gravity connection. Which connection will be required and actual cost will depend on the topography where your home is located. The Township has met with funding agencies (PA Vest and USDA) and there are low interest loans and/or grants for people required to connect to public sewer. The low interest loans are available through PA Vest and are open to all residents as long as they are not in bankruptcy. The PA Vest program has loan amounts up to \$25,000.00, the interest rate is 1.75% and it can be paid back over 20 years. For example, if you borrow \$15,000.00 from Pa Vest, the monthly payment would be \$75.00, if you borrow \$25,000.00 the monthly payment would be \$124.00. There are no prepayment penalties in these programs.

The USDA program has some grant funding for people over 62 and for those in lower income brackets. The USDA program has grant funding (based upon eligibility) up to \$7,500.00 and loan amounts up to \$20,000.00. The USDA programs can be combined for a total of \$27,500.00. The interest rate on USDA Loans is 1% and can be paid back over 20 years. USDA did not provide a sample payment schedule as was provided by Pa Vest. The Township will have information for both programs available to residents.

Can the Township refuse to install the public sewer line?

The answer is no. We have been informed by DEP that they expect the 230 Corridor part of the 537 Plan to be completed and they have also indicated that they are not giving the Township ten more years to complete it (this has

been in the 537 Plan since 1988). If we do not do it, DEP will issue a consent decree and legally force the Township to install the line. The clean streams laws of DEP go back to the mid to late sixties and the state mandated 537 Plan was enacted by the Township in 1988. The Township does not have the option of refusing to implement the 537 Plan requirements. Elected officials that refuse to implement DEP consent decrees have actually been incarcerated personally.

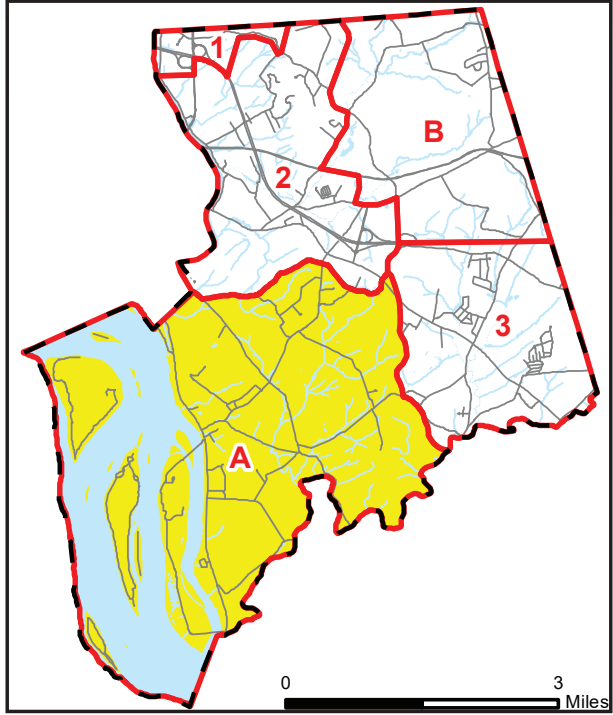
If DEP is mandating this, are they going to help the Township pay for it? Pa Vest is the program to assist Townships and other Municipalities with the cost of implementing the 537 Plan requirements. The PA Vest program provides low interest loans and up to a 20% grant component of their program. The issue the Township faces is that the cost of the 230 project is expected to be \$26,000,000.00, so even if we received the amount of grant funding typically awarded (and there is no guarantee of that) we would still have to be able to fund \$20,800,000.00 in project costs. PA vest has indicated that this project would probably receive minimal grant funding and most likely be funded through loans. Additionally, DEP does not consider a Township's ability to pay for these projects, they simply mandate their completion.

Conclusions

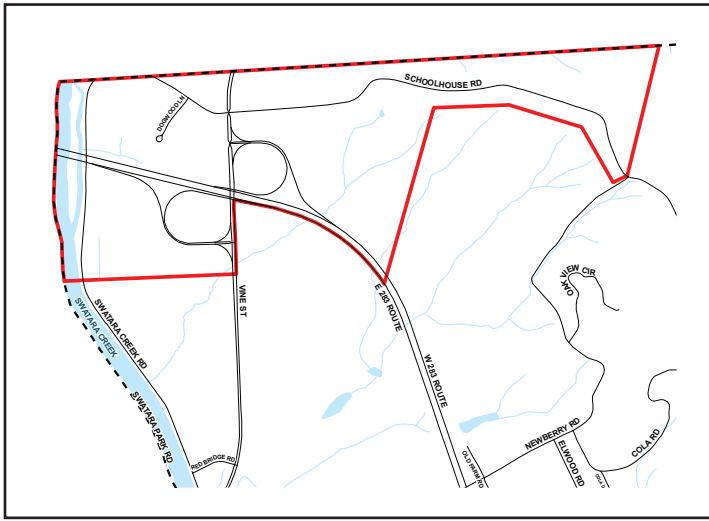
The economic pressures of unfunded mandates from the state and federal government have placed the Township in a position of needing to find partners to meet its obligations and increase our tax base so that it will not have to place additional tax burdens on current residents. The changes in zoning are necessary to reflect current industry uses, mitigate the impact of unfunded mandates, and to allow managed growth in an area that has historically been zoned for commercial development, while maintaining the rural nature of the rest of the Township. The Township is exploring if it can legally make the connection to any sewer in the 230 Corridor optional for existing residences that have properly functioning systems and has found funding options through PA Vest and USDA for residents to utilize to connect to public sewer. There has been a lot of information provided here, please read it thoroughly and contact the Township Manager at 717-944-1803 with any questions.

Sewer Services Areas Maps

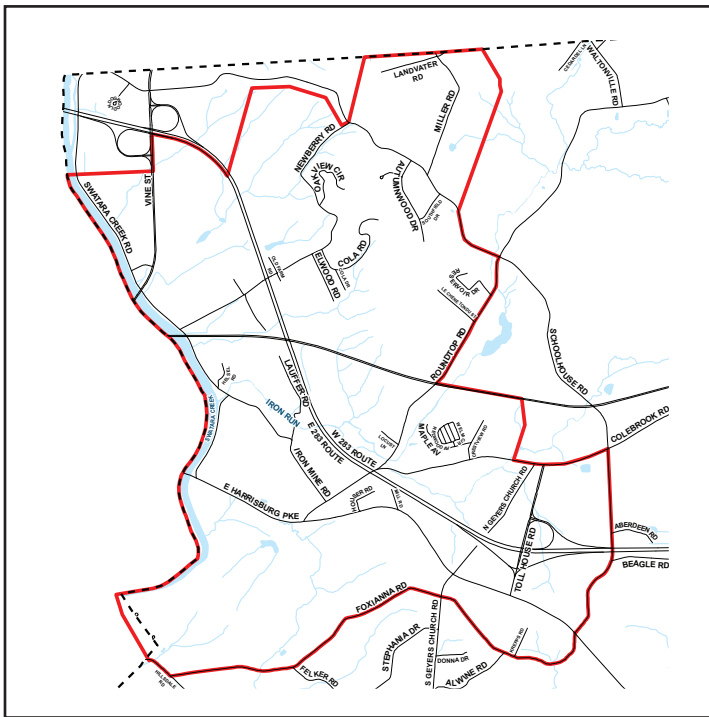
- Road
- - - Londonderry
- - - Township Boundary
- ▭ Sewer Service Area
- ▭ Water Body



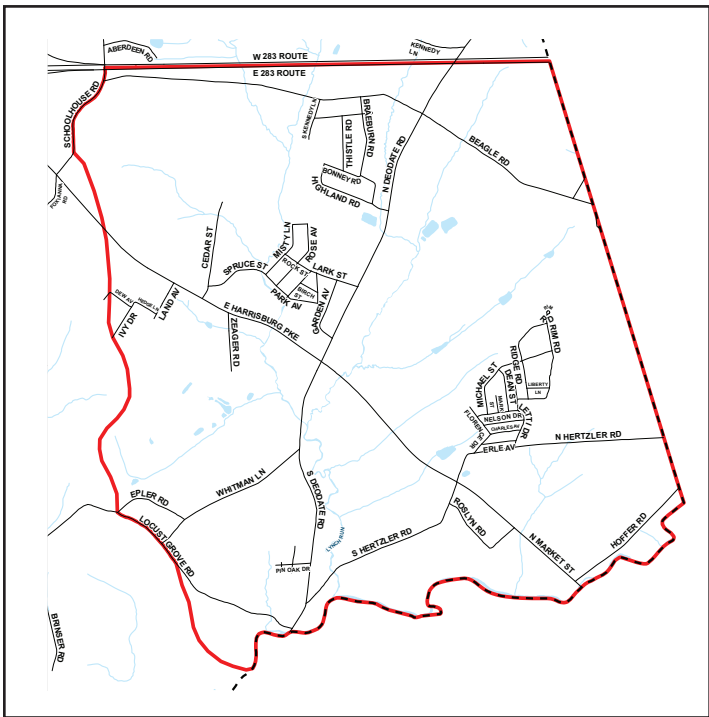
Reference Map



Sewer District #1

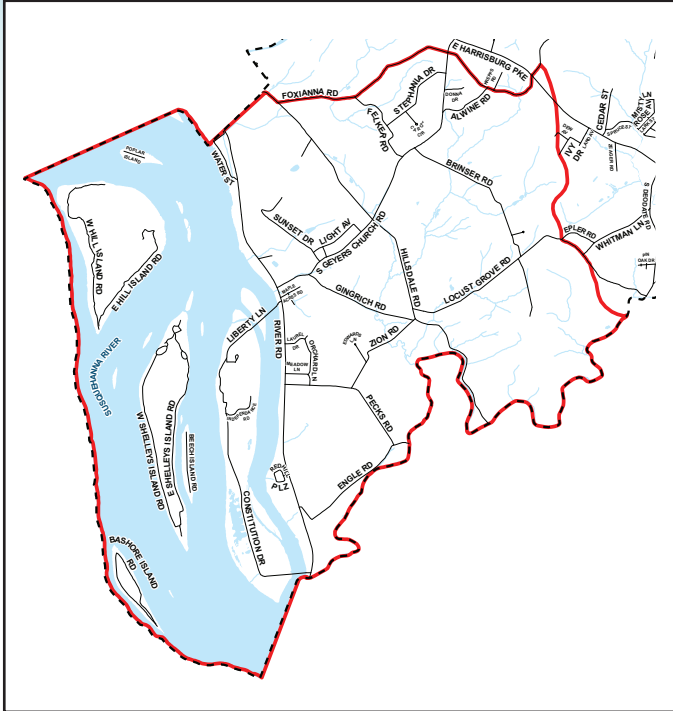


Sewer District #2

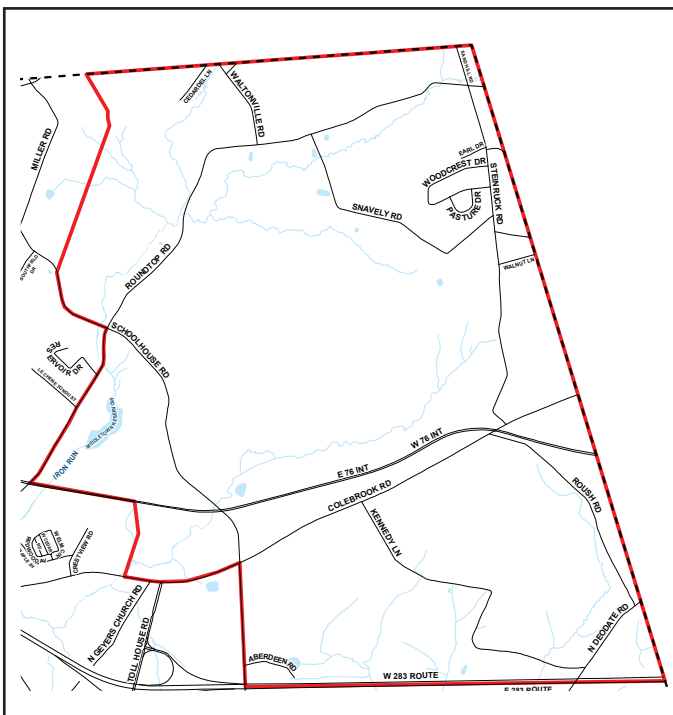


Sewer District #3

On Lot Sewage Disposal System (OLSDS) Progress



On-Lot Management District A



On-Lot Management District B

The Township's OLSDS (On-Lot Sewage Disposal System) pumping, inspection and reporting management program for the Sewer District No. 3 Reporting Period, which began June 1, 2019 and will end June 30, 2020 is currently underway. Please be reminded that if you have property located within Sewer District No. 3 you have until **June 30, 2020** to comply with the inspection requirements. The registered pumper/hauler list is on page 5 or available on the Township website. Only **registered** pumper/haulers are allowed to perform this inspection.

You must provide the required report to the Township that your septic system was pumped and inspected once every fourth year following the District cycle as listed in the Township Ordinance in accordance with the mandates set forth by DEP and required by state law. Reports must be done within those specific District Reporting Periods and can only be accepted when done within those specific timelines as prescribed by the Ordinance for that District. Any testing or inspections done outside of the cycles prescribed by the Ordinance cannot be accepted for reporting purposes. It is important to have this report done within the designated District and cycle for your property address to avoid receiving any fines. Contact the Township, your pumper/hauler or visit the Township website prior to scheduling your pumping/inspection in order to verify that the date you are scheduling is within the proper timeframe per Ordinance requirements. Additional information, cycle dates, addresses and maps regarding the different sewage pumper Districts within the Township and where your property lies with respect to those different Districts have been added to the Township website to help identify when your property must be pumped and inspected. Failure to comply with the reporting requirements of this program will result in fines being levied by the MDJ against the property owners that have not provided the pumper/hauler report and \$25.00 administrative fee for the required reporting period. The minimum fine is \$300.00 and payment of the fine does not eliminate the need for the submittal of the report. Citations have been issued for non-compliance to approximately 100 property owners who have not submitted the required pumper/hauler report and \$25.00 administrative fee for Districts 1 and 2 which ended June 30, 2019. Any report for District No. 3 dated after June 30, 2020 will be considered late. Reports submitted without the \$25.00 administrative fee cannot be accepted.

Please call the Township office if you have any questions about this mandatory program.

Sunset Golf Course

Sunset Golf Club Experience the Change

I guess we should start at the beginning.

In the Fall of 2016 Harrisburg International Airport disclosed that a major runway renovation spanning over three years would be taking place, which included the removal of trees on the golf course property, changing the look of the front nine of the golf course forever. Indeed it has changed but in a very positive way, making Sunset Golf Course one of the more unique courses in our area.

With the removal of the trees from the property what was left was one of the most beautiful views of the Susquehanna River and surrounding counties. York, Lancaster and Cumberland counties can now be seen from the number 10 tee and signature hole of the golf course. Those renovations have allowed Sunset Golf Course to provide a different golfing experience for all of its members and patrons, making an experience every golfer will remember.

Sunset Golf Course hosts numerous golf outings, fundraisers and corporate outings, with full catering service available, including beverages and alcohol service.

The deck at Sunset Bar and Grill features live Thursday night entertainment from June through September, where top performers around the area showcase their talent. Sunset Bar and Grill offers a great place to eat as well. The new menu, which includes old favorites combined with many new healthy choices, makes Sunset Bar and Grill the perfect place to wind down and spend your evening. Oh! By the way! You can also enjoy your favorite drink while sitting on the deck watching one of the most beautiful sunsets in the area.

Weddings, baby showers, birthday parties, anniversaries, graduation parties and much more. Sunset Bar and Grill can host your event. We offer full catering service, including beverages and alcohol service. We will even provide linens for your event!

Sunset Golf Course is not just a golf course. Sunset Golf Course is a great place to experience and play a round of golf on a great course. Come See Us!

Sam Risteff, Interim Manger

Sunset Golf Course



SUNSET
GOLF COURSE

2601 SUNSET DRIVE, MIDDLETOWN
717-944-5415
WWW.SUNSETGC.COM



Tee Sponsorships Available!



Leagues & Outings
Book now for 2020!



PRO-SHOP SALE!
Big savings on all your golfing needs!



2020 ANNUAL GOLF PASS
Township Resident Discount
10% Discount if purchased before March 31, 2020.



Introducing The Sunset Golf Course App Now Available For Apple & Android!



Course Layout



Annual Golf Pass



Tee Time Reservation



One-Touch Dialing / GPS



Social Sharing & So Much More!

Download It For FREE Today!!

Simply Scan Below With Your Smartphone



Powered By: **H2HMobile**

Book your group now! Tee Sponsorships, Leagues & Outings!
Call Sam Risteff at 717-944-5415 or email sristeff@londonderry.org



Happenings at the Club House

Come and enjoy our breathtaking views of the Susquehanna River and surrounding areas!

Whether it is a wedding reception, bridal or baby shower, class reunion, birthday celebration, or even a corporate party, everyone will enjoy the view!



The Bar & Grill has recently implemented a new Daily Specials menu Monday through Friday. Go to sunsetbandg.com or facebook.com/sunsetbandg for more information.

Join us at the Sunset Bar & Grill for Darts and/or Corn Hole! In our spacious indoor Clubhouse, Darts, Corn Hole and other games are easy to organize!

Entertainment Continues on the Patio ...

Join us Thursday nights June through September and enjoy outstanding area bands. We have a covered patio & Tiki Bar! Watch our website for menu & special events.



We hope to see you up here enjoying a beverage very soon! Come out & enjoy music on the patio.

Let us cater your next event or use your own caterer! (accommodates 100-150 people)

CALL TODAY:
for banquet rental prices & special menus

CONTACT:
Sam Risteff at
717-944-5415 or email
sristeff@londonderrypa.org



Great food.
Great deals.
An unforgettable view.



Londonderry Township Recycling Center

2501 Sunset Drive • Middletown, PA

YARD WASTE RECYCLING –

The yard waste recycling area is now open for Londonderry Township residents by permit only. A permit can be obtained at the Township office, 783 S. Geysers Church Road between the hours of 8:30 a.m. and 5:00 p.m., Monday through Friday. There is no charge for the permit. Proof of residency is required.

The yard waste recycling area is located at 2501 Sunset Drive, across from the Public Works Building. There are two areas to deposit yard waste consisting of flowers, plants, grass clippings.

Please keep waste inside of the logs and dump debris out of bags. There will be a receptacle provided to dispose of the bags. Absolutely no dumping of trash such as lumber, tires, concrete or metal is permitted. This recycling area is for **YARD WASTE ONLY**.

We encourage residents to take brush and leaves (no grass clippings or tree stumps) to Zeager Brothers, 4000 E. Harrisburg Pike in Middletown, located across from Saturday's Market. This service is for residents only and not for commercial companies.

For more information on what items Zeager Brothers will accept give them a call at 717-944-8481. Thank you!

SAVE THE DATE!

SATURDAY, OCTOBER 19TH 9AM-1PM
Westporte Center Plaza
302 West Main Street • Middletown

Need to 'Organize Your Life'? *Healthier Spaces Organizing* is hosting a 'hard to recycle' event sponsored by the Dauphin County Commissioners. They will be collecting:

- Electronics and Paper Recycling collected by the Dauphin County—Recycling Center (Paper will be shredded off-site)
- Clothing to be donated to Community Aid
- Furniture and housewares to be donated to Habitat for Humanity
- Medication collection by PSU Milton Hershey Med.

Dauphin County Recycling Center

1625 S. Cameron Street • Harrisburg • 717-982-6772
Hours: Monday-Friday 8:30–4:30 • Saturday 9:00–2:00

Drop off location for unwanted or obsolete electronics, appliances and much more including:

Car and boat batteries • Lithium, rechargeable and regular batteries • Thermostats containing mercury • Empty propane canisters • Fire extinguishers • Light bulbs (including compact fluorescent bulbs) • (long fluorescent tubes – contact Dauphin Electric) • Refrigerators/freezers/air conditioners (\$20 fee for freon removal) • Dehumidifiers • TV's • Microwaves • Computers (must be intact) • Hardcover books - if the local library won't take them, cut covers off first

Large items — if you get it there, they'll unload it!
To dispose of hazardous waste such as oil drums, insecticides, spray cans, poisons, please call 800-449-7587.

Conewago Township Recycling Center

3279 Old Hershey Road • Hershey, PA • 717-534-8556

HOUSEHOLD GOODS –

Dauphin County has designated Conewago Township as the local recycling center. No permit is required and there is no charge to residents.

Items that may be brought to the Recycling Center:
Magazines/office paper/junk mail/phone book • Corrugated cardboard and boxboard • Newspapers and inserts • Aluminum and tin cans • Plastic bottles with recycling symbols on them

Glass bottles and jars are no longer accepted.

APPLIANCES, FURNITURE, SCRAP METAL –

Do you need to dispose of items such as appliances, furniture or scrap metal? One option is to contact your trash hauler and inquire what items they will pick up. Another option is to contact local scrap metal yards. Some scrap yards will pay you for metals such as aluminum, copper, brass, etc.

CSR Scrap Metal (717) 233-7927
Dauphin County Recycling Center (717) 982-6772
DEP Waste Management (717) 705-4918
Royalton Recycling (717) 944-4823

Conewago Creek Water Quality Improvement Project

Much of Londonderry Township's charm comes from its natural beauty. Residents appreciate the rural landscape and enjoy many recreational activities, including fishing at prime spots along Conewago Creek. This is what makes the Township feel like home, and your local officials are working hard to preserve this natural character for generations to come.

Right now, the health of the creek is in danger. Erosion is causing farmers along the creek to lose valuable soil, and unmanaged stormwater runoff is carrying pollutants into the creek – sometimes threatening the viability of fishing. These pollutants include sediment and nutrients that can harm local fish populations.

The Township has sought and secured funding from numerous sources to study the creek, identify the causes and identify priority areas affected by pollution. They will be pursuing engineering solutions from Herbert, Rowland & Grubic, Inc. (Township Engineer) and Land Studies, Inc. that will improve water quality in the most cost-effective ways.

The National Fish & Wildlife Foundation provided nearly \$50,000 for an initial study, and the Pennsylvania Department of Environmental Protection (PADEP) is providing nearly \$200,000 from the Sunoco Pipeline settlement to fund the design and permitting of measures identified in the initial study. PADEP is also providing two (2) grants from its Growing Greener program to fund the construction of these measures once design and permitting are complete. More recently, the Township applied to the Commonwealth Financing Authority for additional funding to cover the cost of riparian buffer plantings.

In total to date, the Township has received more than \$1.3 million in funding to cover the cost of a project that will include the construction of

three (3) bioswales that will be built on farmland alongside the creek, as well as stream restoration measures such as streambank stabilization, removal of legacy sediment and floodplain reconnection. The Township also plans to create and/or expand the riparian buffer along the creek to shade this portion of the creek, again with the goal of improving water quality and the aquatic habitat.

This is a significant effort that has involved many partners to date. Mt. Joy Township, our neighbor on the south side of the creek, will be contributing funding in support of these efforts because they too will benefit from improved water quality in Conewago Creek.

Unlike municipalities, water has no borders. The Conewago Creek watershed encompasses many municipalities before discharging into the Susquehanna River, which provides drinking water to millions of Pennsylvanians. The river then feeds into the Chesapeake Bay, our nation's largest estuary. The quality of water in one community – like ours – is dependent upon the quality of water in every community within the same watershed. Though projects like these provide improvement to the stream impairments

in these larger watersheds, the largest benefit to the correction of impairments will be felt by the local community that utilizes the Conewago Creek for aesthetic, recreational and drinking water purposes.

This is why a wide variety of public and private organizations have joined together in the effort to improve Conewago Creek, including:

- Private landowners and farmers
- The Dauphin County Conservation District
- The Manada Conservancy
- Penn State University Agriculture &

Environment Center

- The Conewago Creek Initiative
- The Tri-County Conewago Creek Association

Restoring the creek will protect drinking water supplies downstream and improve recreation here in Londonderry Township. In particular, stream restoration should reduce the frequency of periods when the creek is unfishable due to high turbidity after a storm. Reducing sediment and nutrient pollution will help the population of fish grow and return to previous levels.

The Township is exploring additional options for improving the recreational value of the creek, including a connection to the nearby Conewago Rail Trail. This connection may create a loop through the riparian buffer area with two trailheads. Pedestrians and cyclists could enjoy the natural beauty of the creek and learn about the way native plantings filter pollutants from our water.

Residents and school children, in particular, could benefit from educational signage at the trail connection and a potential environmental education center that the Township is considering implementing at the project site. This project is now in the conceptual planning and investigation phases, but Township officials hope it could be used to assist local farmers, provide educational environmental training, and assist with wildlife conservation in the near future.

Protecting and preserving what makes Londonderry Township special is a continuous effort, and the projects Township officials are undertaking today along the Conewago Creek will bear fruit for local residents far into the future once they are completed.

Matthew S. Bonanno, P.E.,
Herbert, Rowland & Grubic, Inc.

Recreation and Community Outreach

Bocce



WINNERS OF THE 2019 SUMMER LONDONDERRY BOCCE LEAGUE

MONDAY MORNING LEAGUE WINNERS

Left to Right:

Diane Schubert,
Shirley Davis
(Captain), and
Andrea Stevens.
Absent: Amy Gross.



TUESDAY MORNING LEAGUE WINNERS

Left to Right:

Tied for first place:
Ken Bleiler,
Rich Johnson and
Charlie Starr.
Absent: Steve Fox.



Left to Right:

Bill and Donna
Moore, Betty and
Glen Barb.



TUESDAY EVENING LEAGUE WINNERS

Back Row:

Edgar and Cindy
Obenstine,
Regina Anderson
and Lois Conley.



INTERESTED IN PLAYING IN 2020?

You may sign up as an individual, as a couple, or as a team (4 players). No experience is necessary. Bocce is an easy game to learn. For more information, call 717-944-6518.

Rugby Field Update

The Harrisburg Rugby Football club is celebrating a big year. Founded in 1969, and going strong in 2019, we are proud to include athletes, parents, children, community members and for 50 years. Our heritage as central Pennsylvania's longest standing rugby club is forging new relationships, breaking barriers and ground, and promoting athletics and leisure in Londonderry Township.

Our Futures and Field project in collaboration with the Township at Sunset Park is back in motion. Rugby uprights have been ordered, light poles are being delivered, and final touches and determinations are in the works about any additional topsoil needs. A small work group continue their efforts through a multitude of state and local grant applications, along with composing sponsorship and large-scale fundraising campaigns.

Other club members are focusing on growing the Club's profile, the game of rugby, and connecting with the community at large. The fall playing season will get underway in mid-August for both the Men and Women's teams. The Women look to move forward with skill building and refining their technique.

The Women worked their way through a difficult east coast playoff bracket, to face the Sacramento Amazons in the National final in Obetz, Ohio on June 2nd. The group's hard work and cohesion, coupled with cheers from scores of traveling fans (and those who weren't able to travel, at the Tattered Flag) powered a mighty comeback. After going down by more than 30 points in the first half, HRFC closed the gap, but fell short in the final minutes.

The men open a long schedule on August 24th, in Highspire against the Washington Irish RFC. Looking to build on a successful spring campaign, the team has a new core of young players and a group of seasoned veterans. The nine game matrix begins on September 7th and concludes November 1st. The Women's first home game is on October 5th against fellow PA team, Brandywine.

As the summer wanes, the temperatures drop (hopefully), and the sun sets earlier, the efforts on the new complex in Sunset Park swing into full gear, the club resets to the sport we love.



Volunteer Application

Please mail to:

LONDONDERRY TOWNSHIP • 783 S. Geyers Church Road • Middletown, PA 17057
Phone: 717-944-1803 • Fax: 717-944-1926 • www.londonderry.org



PLEASE VOLUNTEER TODAY!

Date: _____ Phone: (_____) _____

Name: _____

Address: _____
Street City Zip

Email: _____

I would be interested in Volunteering for the following organizations:

Londonderry Lionettes Meals on Wheels VIP Van Service VIP Van Coordinator

I would be interested in serving on the following Boards or Commissions:

Planning Commission Zoning Hearing Board Emergency Management Agency

I would be interested in receiving more information on volunteering at the Fire House:

Fire Fighter Fire Police Auxiliary Ambulance Crew Fund Raising

Please list times available: _____

Meals on Wheels

The Dauphin County Area Agency on Aging provides a well-balanced hot meal for delivery to residents of Dauphin County who are assessed by the Agency's Care Management Unit as being frail and/or home bound because of physical, mental, or emotional disability, and without a caregiver who is able to provide meals on a regular basis. Meals are delivered five days a week by volunteers who observe the well-being of the home bound individual receiving the meal. The volunteers are recruited by our local Meals-on-Wheels organization. Recipients are encouraged to make a voluntary contribution toward the cost of the meals according to their financial ability.

To request home delivered meals, please call the Dauphin County Area Agency on Aging at 717-780-6130.

Two Ways to Help the Ronald McDonald House

CHANGE LIVES, ONE PAIR AT A TIME

1 The Londonderry Lionettes are collecting used eyeglasses for people in need and for people in low and middle-income communities. The eyeglasses are sent to a local Lions Club who forward them to the Lions Eyeglass Recycling Center. There the eyeglasses are cleaned, sorted by prescription strength, packaged and distributed to those in need.

Collection boxes for eyeglasses have been placed at Karns, Londonderry Elementary School, Evangelical U.M. Church, St. Peters Lutheran Church, Presbyterian Church, Geyers U.M. Church, Wesley U.M. Church, and New Beginnings Church. Please place all eyeglasses in a Ziploc bag for protection during transport. **NOTE: The Lions Club only want the eyeglasses. No eyeglass cases, sunglasses, or loose lenses. For more information on this project, please call Anita Housman at 756-7467 or Louise Morgan at 944-6518.**

HELP BY COLLECTING METAL TABS FROM BEVERAGE CANS & CANNED GOODS

2 The metal tabs, from beverage cans and canned goods, are collected and sent to the Ronald McDonald House where they are sold to a local recycling company. The proceeds are used for the daily operating expenses at the Ronald McDonald House. They average \$1,000.00 per month. Collection boxes for the can tabs have been placed at the

Londonderry Township Building, and TLC-Quilting, 2900 E. Harrisburg Pike. Other sites are being sought as well. If you would like to have a collection box in your workplace, church or business to help support either of these programs, please contact Anita Housman or Louise Morgan at the aforementioned phone numbers.

Community Outreach

Stray & Feral/Wild Animals, Dog Licenses

A RESOURCE FOR CARETAKERS AND FRIENDS OF STRAY AND FERAL/WILD CATS

Helping Hands for Animals

Trap Neuter Return



Helping Hands for Animals has openings at our spay/neuter facility but you will need to call for an appointment. This clinic is designed for feral/wild, free roaming and community cats as well as unconfined pet cats. All cats will be spayed or neutered, given rabies and FVRCP (distemper) vaccinations, treated with Revolution (flea, roundworm/ hookworm and ear mite treatment) and ear tipped for identification as fixed animals. *The cost is \$30.00 and AN APPOINTMENT IS NECESSARY.* Appointments can be made by calling 717-687-7297. Helping Hands currently holds clinics EVERY Tuesday and Wednesday. Please note that due to limited resources, all cats must be able to be trapped and transported to our facility which is located on New Danville Pike in Lancaster. www.helpinghandsforanimals.org.



OTHER SPAY/NEUTER CLINICS

PETS FERAL/WILD

Friends of All Animals 717-272-6466 FriendsofAllAnimals.org	X	X
Greys & Strays 717-304-9987 GreysandStrays.com	X	X
Humane Society of Harrisburg 717-564-3320 HumaneSocietyHbg.org	X	X
Nobody's Cats Foundation 855-867-4228 NobodysCats.org		X
PAWS of PA 717-957-8122 PawsofPa.org	X	X
SNAP (Spay Neuter Assistance Program) 717-732-5377 SnapofPa.org	X	X
York County SPCA 717-764-6109 ycspca.org	X	X

LOST DOGS:

PAlostDogs.com allows residents to post a photo and description of their lost dog. Almost 6,000 dogs in PA have been reunited through this site.

A lost dog is more likely to be found if licensed. The Treasurer's office records all sales and will contact the owner when a lost dog is found!

Lifetime licenses are available at the Treasurer's Office at DauphinCounty.org.

TOWNSHIP VOUCHER PROGRAM CONTINUES WITH THE HUMANE SOCIETY OF HARRISBURG

7790 Grayson Road, Harrisburg • (717) 564-3320 • SPAYING/NEUTERING BY APPOINTMENT ONLY

SOME IMPORTANT FACTS TO REMEMBER:

Before bringing the animals to the Humane Society, residents must first obtain a trap and release voucher OR an animal surrender form from the Township office between the hours of 8:30 a.m. to 5:00 p.m., Monday through Friday. Proof of residency is required. Animals are not permitted inside the Township office.

Trap and Release Vouchers—The trap and release vouchers are for feral (wild) cats only. The animal must be placed in a crate prior to obtaining a voucher from the Township office. One voucher per animal is given. The resident must make an appointment with the Humane Society to have the animal spayed or neutered. The animals will then be returned to the resident so that the resident can release the animal in the original location where it was found.

Animal Surrender Forms—The animal surrender form is for stray cats and dogs. Residents can obtain an animal surrender form at the Township office once the animal has been placed in a crate. One form per animal is given. No appointment is needed to surrender stray animals at the Humane Society.

Dog Licenses—applications are NOT available at the Township office. Residents may purchase a license online at PADogLicense.com. A metal tag will be mailed within a few days. Dogs over three months must be licensed by state law. If not, fines are up to \$300 for each violation. Fees collected are used to underwrite costs of monitoring PA kennels and puppy mills as well as other dog welfare initiatives not funded by tax dollars. **Dog tags run with the calendar year and must be renewed annually!**

Londonderry Lionettes Happenings

The Londonderry Lionettes perform community service projects locally, in the surrounding communities, statewide, and internationally.

Remaining projects for 2019 include:

- Provide Christmas presents to our adopted Grandmothers at Frey Village and send greeting cards to them for major holidays and birthdays.
- Continue collecting used eyeglasses (see separate article) for the Pennsylvania Lions Club. To date, the Lionettes have collected 1,553 pairs of eyeglasses since the project began five years ago. We will also continue to collect metal tabs from beverage cans and canned goods for the Ronald McDonald House.
- Provide clothing to Londonderry Elementary School to be distributed by the school nurse to children as needed.
- Make a donation to the Bethesda Mission.
- Provide healthy snack bags for Meals on Wheels clients (Londonderry and Conewago Townships) and adopted grandmothers in October.
- Donation of gloves and hats for the Christmas baskets at Londonderry Elementary School.

Monthly speakers for the Lionettes' meetings for the rest of 2019 are:

- September 4 – Jwana Smith, "On Becoming an American Citizen" Immigration 101
- October 2 – Naseerah Bhatti re: Muslim culture
- November 6 – Overview of the Bethesda Mission

All ladies in Londonderry Township are invited to join the Lionettes and help make a difference in our community. For more information, call 944-6518.

The Lionettes meet the first Wednesday of each month except for June, July, August and December at 7:00 p.m. at Londonderry Elementary School. An annual picnic or outing is scheduled for June, and a Christmas party is held in December.

V.I.P. Senior Van Service

The V.I.P. is a van service for seniors (65 + over) who are residents of Londonderry Township. The van provides transportation to and from doctor and hospital appointments as a priority. If available, other locations within Dauphin County for necessities (i.e. grocery store, bank) may be scheduled. The van is not handicapped accessible so residents must be able to get in and out of the van without assistance. There is no charge for this service, however, donations are strongly suggested and appreciated to help with the costs for gas and upkeep of the van.

PLEASE NOTE: This van service is only possible through the efforts of volunteers. We are in **desperate** need of a volunteer at this time for the phone (take requests and call drivers). This can be done from one's own home and in one's own time frame! We are also in need of volunteers to drive the van. You only need a valid driver's license, clean driving record and a desire to help your fellow citizens.

Driving is on a "can do/if available" basis as the need arises. Both of these volunteer opportunities can fit anyone's schedule! **PLEASE CONSIDER JOINING US FOR THIS IMPORTANT WORK IN OUR TOWNSHIP.**

For more information, please call V.I.P. Van Service at (717) 944-1777 between 10:00 a.m. – Noon, Monday – Friday. The van doesn't operate on weekends.

Fall Fire Safety Tips



SMOKE ALARMS

- ✓ Get in the habit of changing the batteries in your smoke detectors and carbon monoxide detectors every fall and spring when changing the clocks for Daylight Savings Time.

SPACE HEATER TIPS

- ✓ Make sure that any space heaters are surrounded by at least three feet of empty space.
- ✓ Never place clothing or any other objects on a space heater to dry.
- ✓ Do not place space heaters near furniture or draperies.
- ✓ Turn space heaters off when you leave the house or go to bed.
- ✓ Avoid storing any combustible items near heaters.

FIREPLACE TIPS

- ✓ Get your chimney inspected each year to make sure that it is safe.
- ✓ Hire a chimney sweep to clean out your chimney every fall.
- ✓ Repair any cracks in fireplaces.
- ✓ Use fireplace screens to keep sparks and fire debris inside the fireplace.
- ✓ Do not ever use gasoline to start a fire in the fireplace.
- ✓ Never leave a fire unattended.
- ✓ Make sure that combustible materials are not stored within three feet of your fireplace.
- ✓ For natural gas fireplaces, get all connections and lines inspected each season before use.
- ✓ Outdoor fireplaces can be just as dangerous as indoor units. Use and observe all safety precautions when using them.

HOLIDAY TIPS

- ✓ Do not use candles in Halloween jack-o-lanterns. Flashlights are much safer.
- ✓ Make sure that children's costumes are made with fire retardant materials.
- ✓ Use only fire retardant holiday decorations.
- ✓ Verify that all holiday lights and extension cords have been tested by an organization such as Factory Mutual or Underwriters Laboratory.